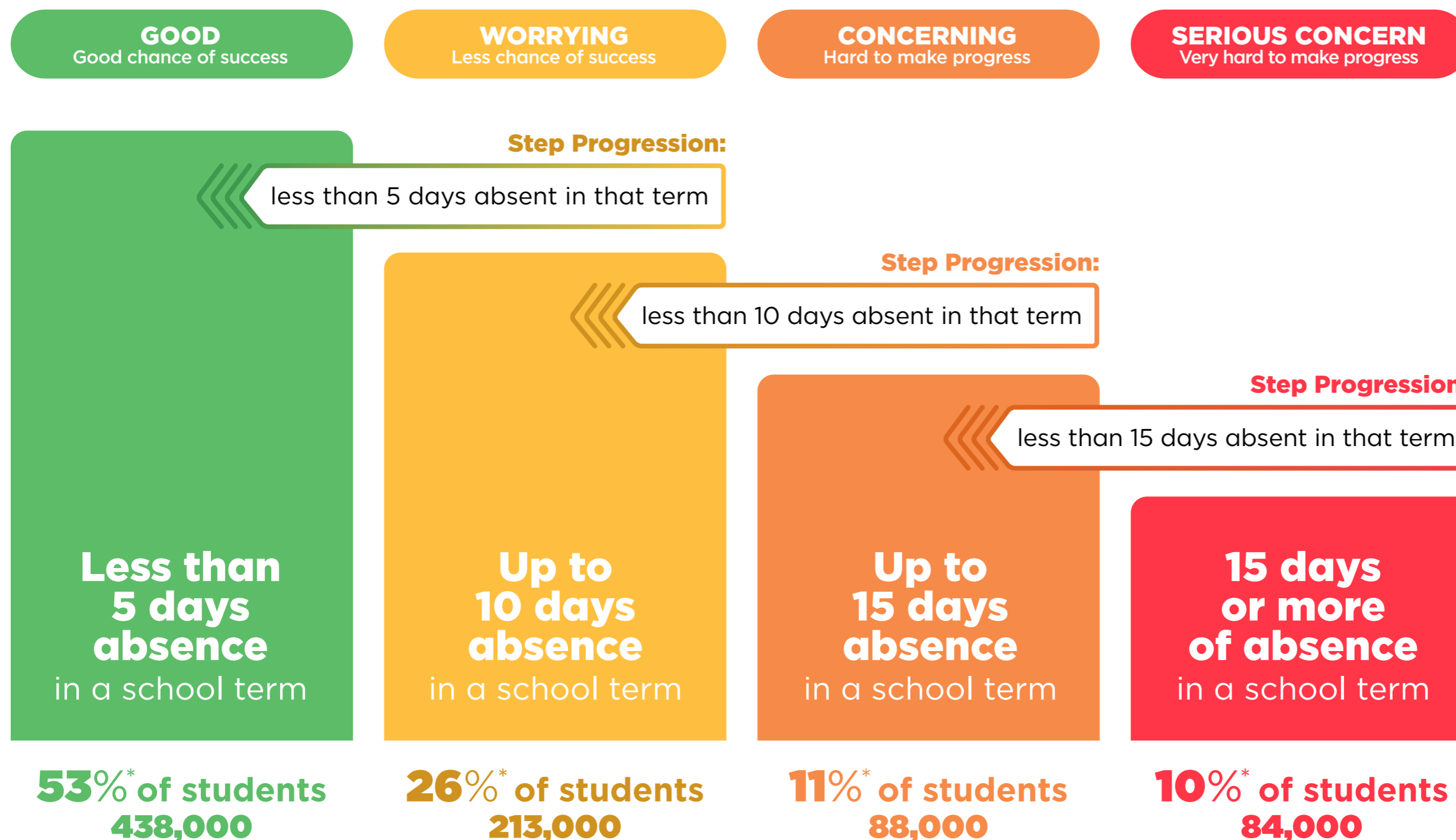


Stepped Attendance Response – STAR

Responding to all absences

The Government's target is for **80%** of students to attend regularly, that is to attend school more than **90%** of the time.



* These approximate numbers of students are based on the numbers of students in the regular attendance categories in Term 2 2024.

Stepped Attendance Response – STAR

Responding to all absences

The Stepped Attendance Response (STAR) sets expectations for school, student, parent/guardian, Ministry of Education and broader system responses to student absence.

It provides a series of activities that should be considered when students meet absence thresholds. The actions taken will be tailored to the reasons for absence, for example a student with a chronic illness will require tailored supports for their education.

The activities include considering prosecution for absences if appropriate support is offered and not taken up.

Day-to-day operations

Schools:

- Assess attendance history of new students and share attendance history when students move between schools.
- Survey students and parents to support effective teaching practice and engagement
- School Leadership and Boards actively minimise disruptions to the school day and week e.g. use callback days, parent teacher meetings held after school
- Support students to continue learning if unable to attend school every day, including using Ministry approved well-being or transitional plans, or health schools where appropriate.

Ministry of Education:

- Convene termly meetings for leaders from local schools and relevant agencies to discuss students with serious attendance concerns where a multi-agency response is required
- Prepares templated materials for schools to adapt and use to promote or respond to attendance
- Provide attendance data reports for individual schools and Kāhui Ako
- Provide schools with a regularly updated list of agencies that schools can work with to support students
- Contract supports and services that are effective at returning students to regular attendance (e.g. Attendance Service)

Less than 5 days absence in a school term

PARENTS/GUARDIANS

- Ensure student attends every day they are able
- Reinforce good attendance habits
- Support other parents to reinforce good attendance habits
- Open communication with school
- Follow school attendance management plan and associated policies and processes

SCHOOLS

- Clear communication to parents on attendance expectations on enrolment, at the start of school year, and each term
- Communicate to parents what steps the school will take in the event their child is absent from school
- Communicate good attendance habits to students and parents
- Monitor attendance
- Communicate to parents about every absence
- Maintain contact details of parents
- Provide students with regular updates on their own attendance
- Report regularly to parents on attendance of their child
- Support students getting to school
- Use school level approaches to promote good social and learning environment

MINISTRY OF EDUCATION

- Monitor that schools have their attendance policy and attendance management plan on website and it is reviewed as required
- Monitor aggregate data and attendance patterns to identify challenges and opportunities at regional and national levels
- Maintain regular contact with schools and support policy development and interventions/supports
- Support schools to be inclusive and safe

53%* of students. 438,000

Up to 10 days absence in a school term

PARENTS/GUARDIANS

- Return student to regular attendance
- Contact school to discuss reasons for absence
- Support student to catch up on missed learning
- Engage in supports offered

SCHOOLS

- Send formal notification and contact parent/guardian to discuss reasons for absence
- Support students to catch up missed learning where required
- Use in-school resources as appropriate to remove barriers e.g. counselor, 2nd hand uniform shop, PB4L

MINISTRY OF EDUCATION

- Support school with formal notification where required

26%* of students. 213,000

Plus previous responses



Stepped Attendance Response – STAR

Responding to all absences

Up to 15 days absence in a school term

PARENTS/GUARDIANS

- Return student to regular attendance
- Attend meeting at the school to analyse reasons for absence and to collaborate on a support plan
- Implement strategies at home

SCHOOLS

- Send escalated formal notification to parents
- Hold meeting to analyse reasons for absence and to collaborate on a support plan
- Develop and implement a plan tailored to the reasons and circumstances around the child's absence
- Use in-school resources as appropriate to remove barriers and request support from Ministry or other agencies as needed

MINISTRY OF EDUCATION

- Identify schools with a significant proportion of students at amber level and offer additional support
- Facilitate multi-agency response and support school to implement and monitor improvement plan
- Promote resources and services to support schools to return students to regular attendance
- Identify and respond to localised barriers
- Monitor regional interventions
- Facilitate involvement of other agencies.
- Reprioritise regional support resources to where most needed/effective
- Develop new initiatives/policies if needed
- Support parent/guardian and school to resolve conflict if needed

11%* of students. 88,000

Plus
previous
responses



15 days or more absence in a school term

PARENTS/GUARDIANS

- Return student to regular attendance
- Engage in improvement plan
- Participate in regular meetings

SCHOOLS

- Send warning notice and make contact to arrange meeting with parents
- Escalate to multi-agency response
- Participate in multi-agency response
- Implement and monitor improvement plan
- Undertake school-led prosecution, or request Ministry-led prosecution, when considered appropriate if supports are offered and not taken up.
- Unenrol students who will not be returning to school

MINISTRY OF EDUCATION

- Identify schools with a significant proportion of students at red level and offer additional support
- Facilitate multi-agency response and support school to implement and monitor improvement plan
- Provide direct support to parents where required
- Coordinate regional response where required
- Consider system-wide initiatives for high-risk attendance
- Undertake Ministry-led prosecution when considered appropriate if supports are offered and not taken up, when requested by schools
- Work with the Attendance Service to re-enrol students who are not enrolled

10%* of students. 84,000

Plus
previous
responses

